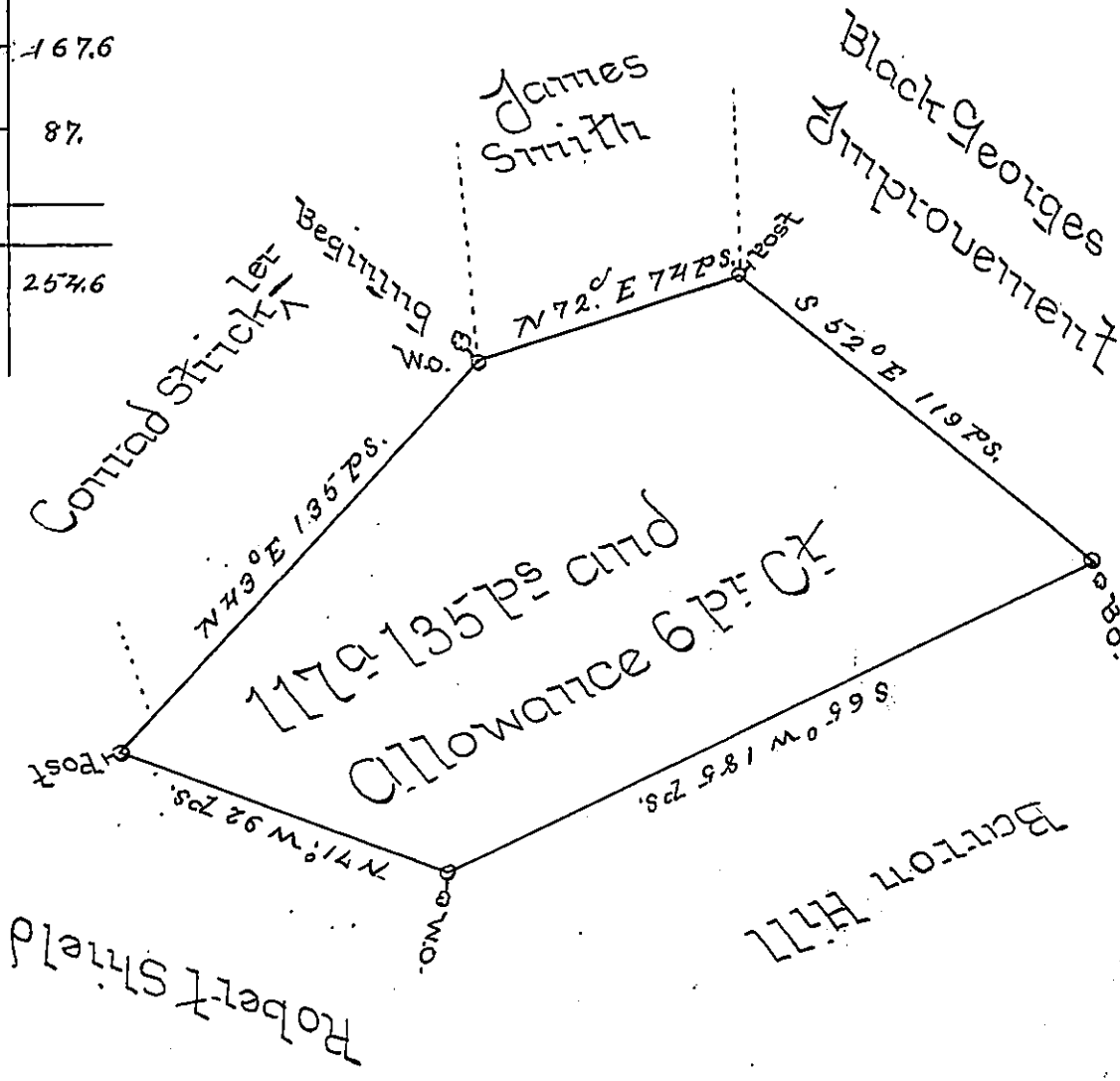


No. Course Dist. North South East West

| | | | | | | |
|----|------|-----|-------|-------|-------|-------|
| 1- | N72E | 74 | 22.2 | | 68.5 | |
| 2- | S52E | 119 | | 73.5 | 93.8 | |
| 3- | S65W | 185 | | 78.2 | | 167.6 |
| 4- | N71W | 92 | 30 | | | 87 |
| 5- | N43E | 135 | 98.7 | | 92.1 | |
| | | | 150.3 | 151.7 | 254.4 | 254.6 |



A Draught of a tract of Land situate in Manchester town-
 ship York County surveyed to James Smith Esq. Assignee
 of Janet Hummel in pursuance of a Warrant from the Hon-
 orable Proprietaries for 1500 dated the 11th day of June
 1763 surveyed the 7th of the 12th mo 1764

Wm Matthews

To John Brukens Surveyor Genl

IN TESTIMONY that the above is a copy of the original remaining on file in
 the Department of Internal Affairs of Pennsylvania, made
 conformably to an Act of Assembly approved the 16th day of
 February, 1833, I have hereunto set my Hand and caused
 the Seal of said Department to be affixed at Harrisburg,
 this 17th day of November 1898.

James W. Latta
 Secretary of Internal Affairs